

Hurricane Sandy 2012

氣象科技研究中心

2017.09.04

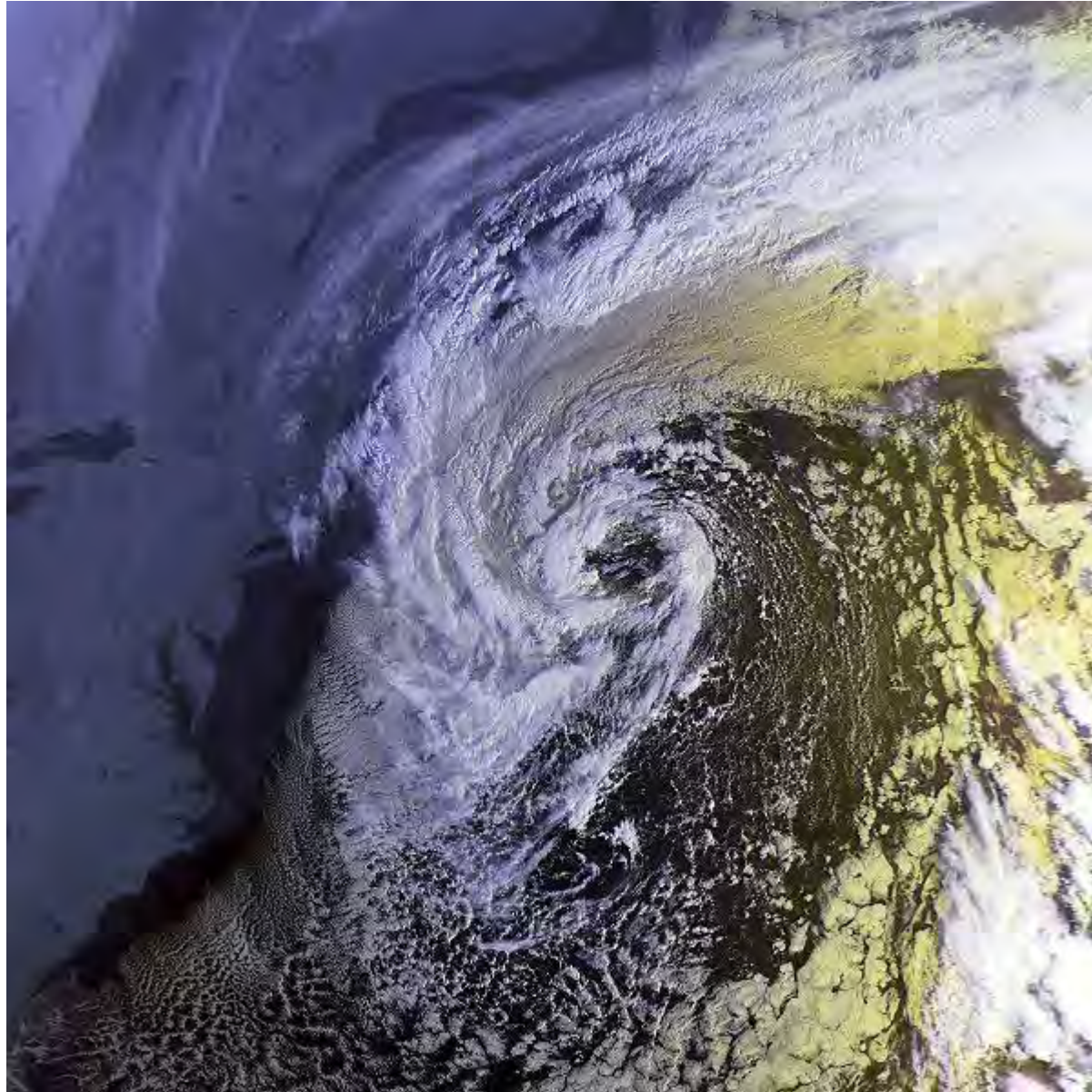
SANDY有甚麼特別？

- 「完美風暴」概念
- SANDY登陸地點緯度很高
- SANDY往北仍維持颶風的暖心結構與強度
- SANDY強風豪雨範圍很大、還有暴風雪
- SANDY造成災損很高，卻是美國防災史上一次成功的典範
- 臺灣應該如何看這個事件？

Perfect Storm

- 看似不相關的天氣系統，碰巧結合在一起，發展出比個別系統影響程度都要大上很多的風暴系統，稱「完美風暴」。
 - 熱帶氣旋、溫帶氣旋、鋒面系統、高海溫

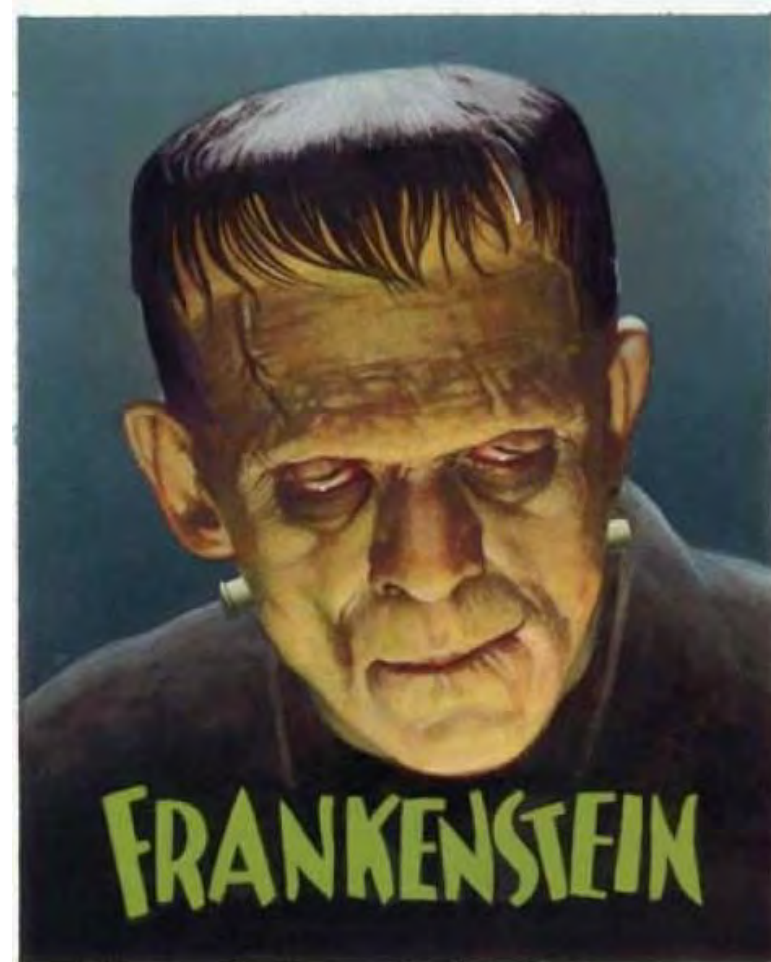
Halloween storm 30 oct 1991 1226Z



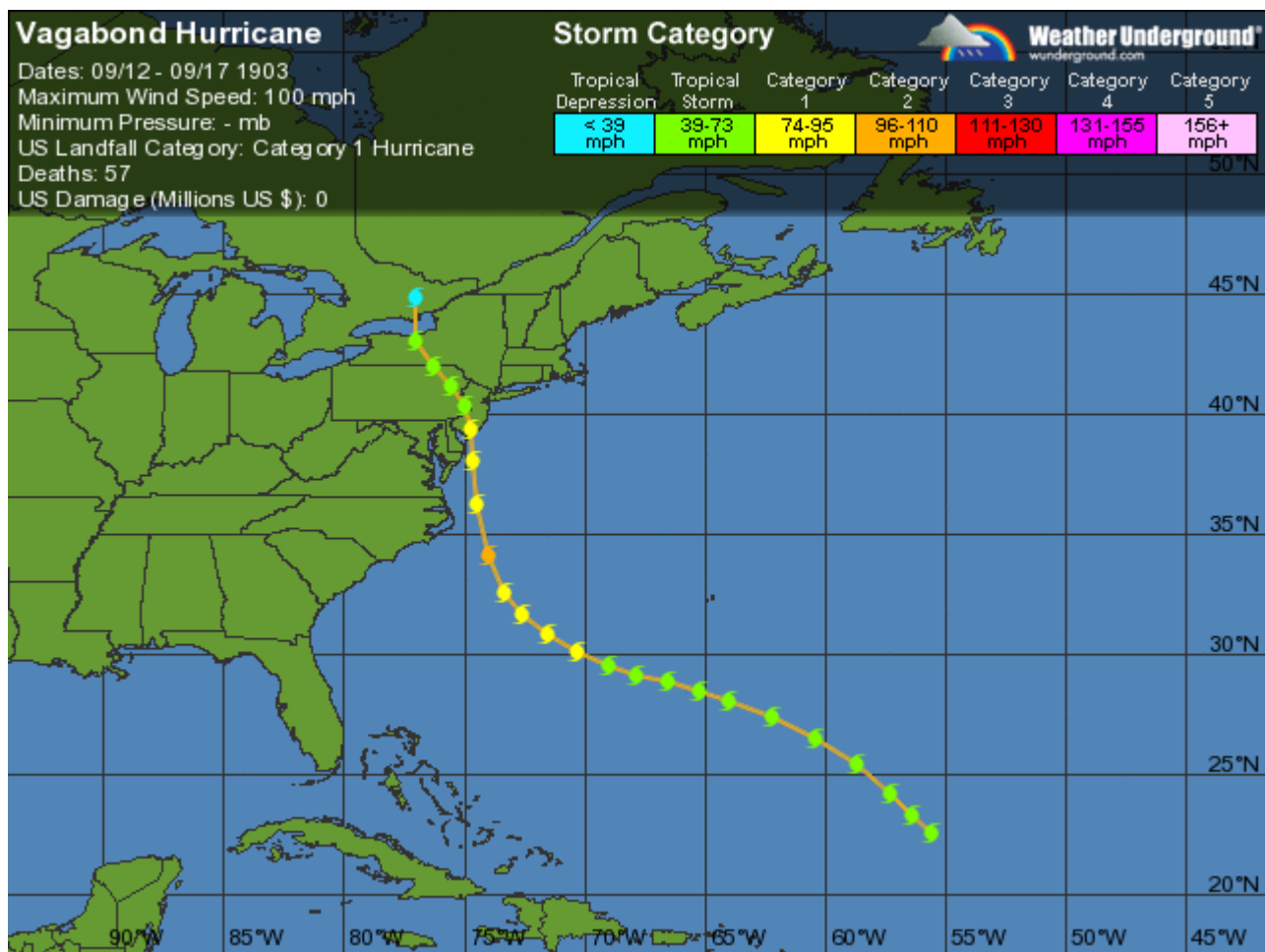
Franskenstorm

(Jim Cisco/FOB/HPC/NOAA)

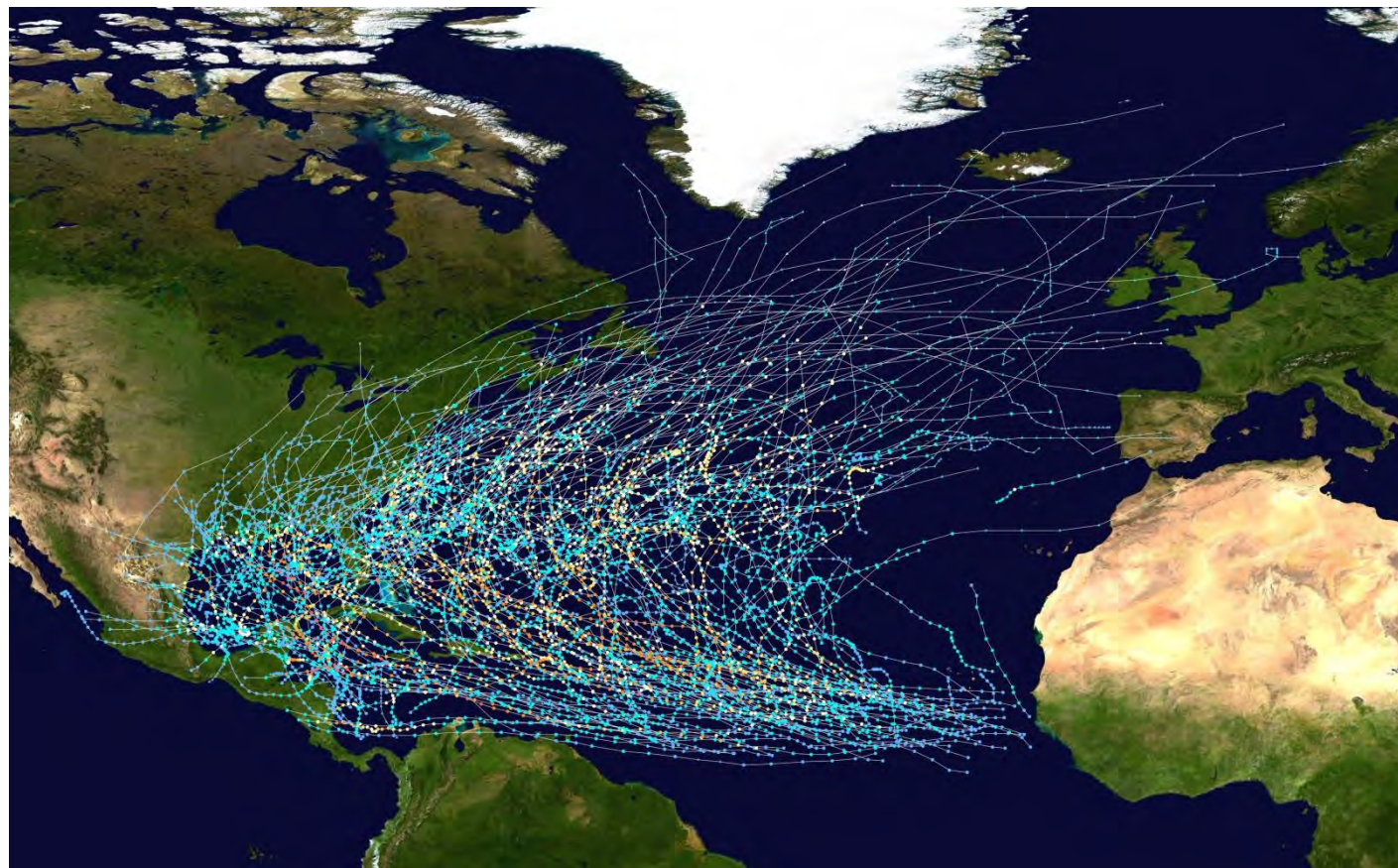
- Franskenstein + Storm
- 科學怪人 + 風暴
 - 本來有媒體用「完美風暴」描述預測中的SANDY，但是用「完美」來形容可能致命的風暴，公開的說會有道德問題。因為剛好遇到萬聖節，所以NOAA用科學怪人來隱含「組合成的怪物」的意思，創造一個新字'Frankenstorm'，相對還是比較貼切。



為什麼颶風很少登陸紐澤西？



北大西洋颶風路徑



Hurricane Sandy 2012

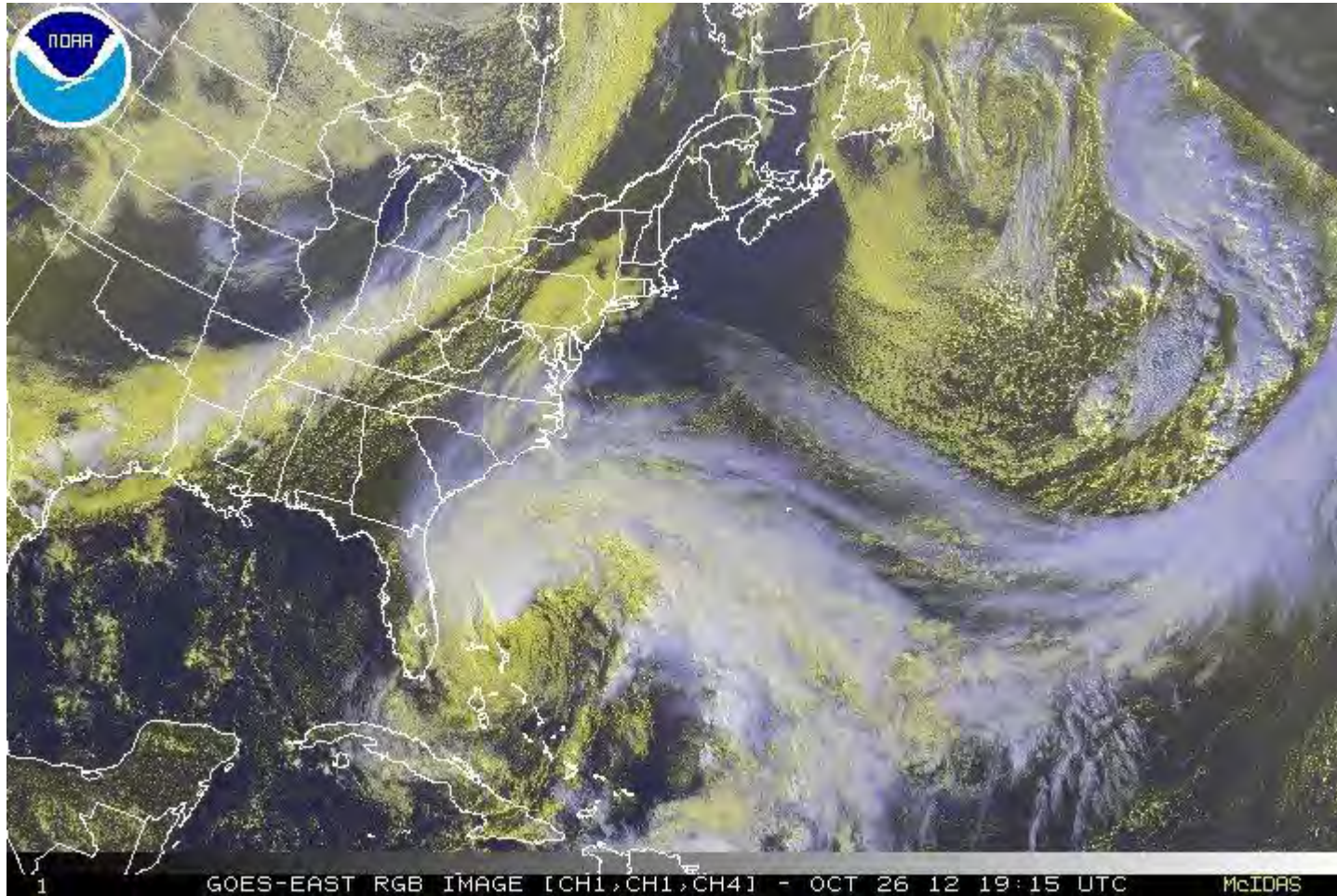


<https://commons.wikimedia.org/w/index.php?curid=22384003>

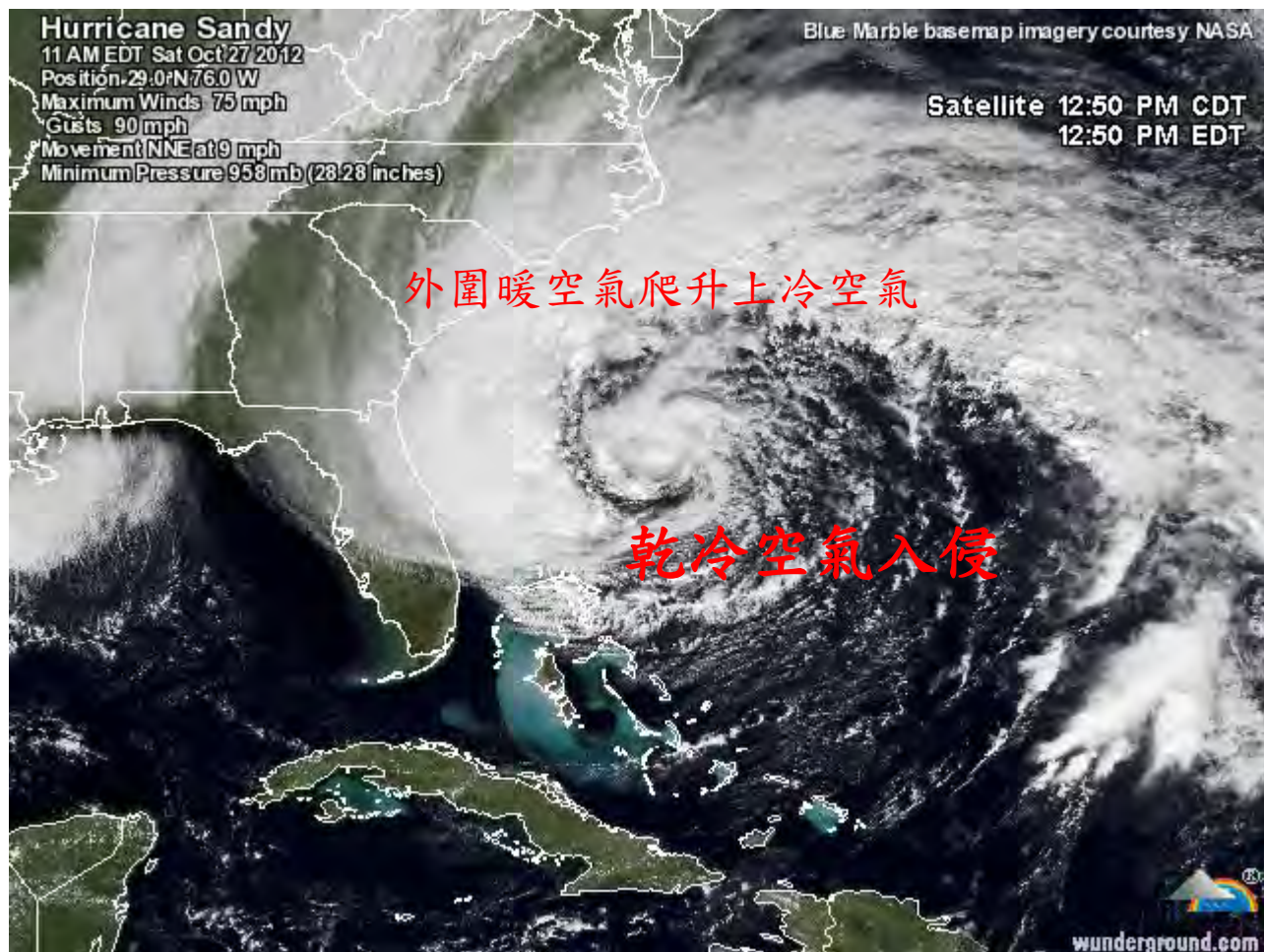
綜觀天氣型態



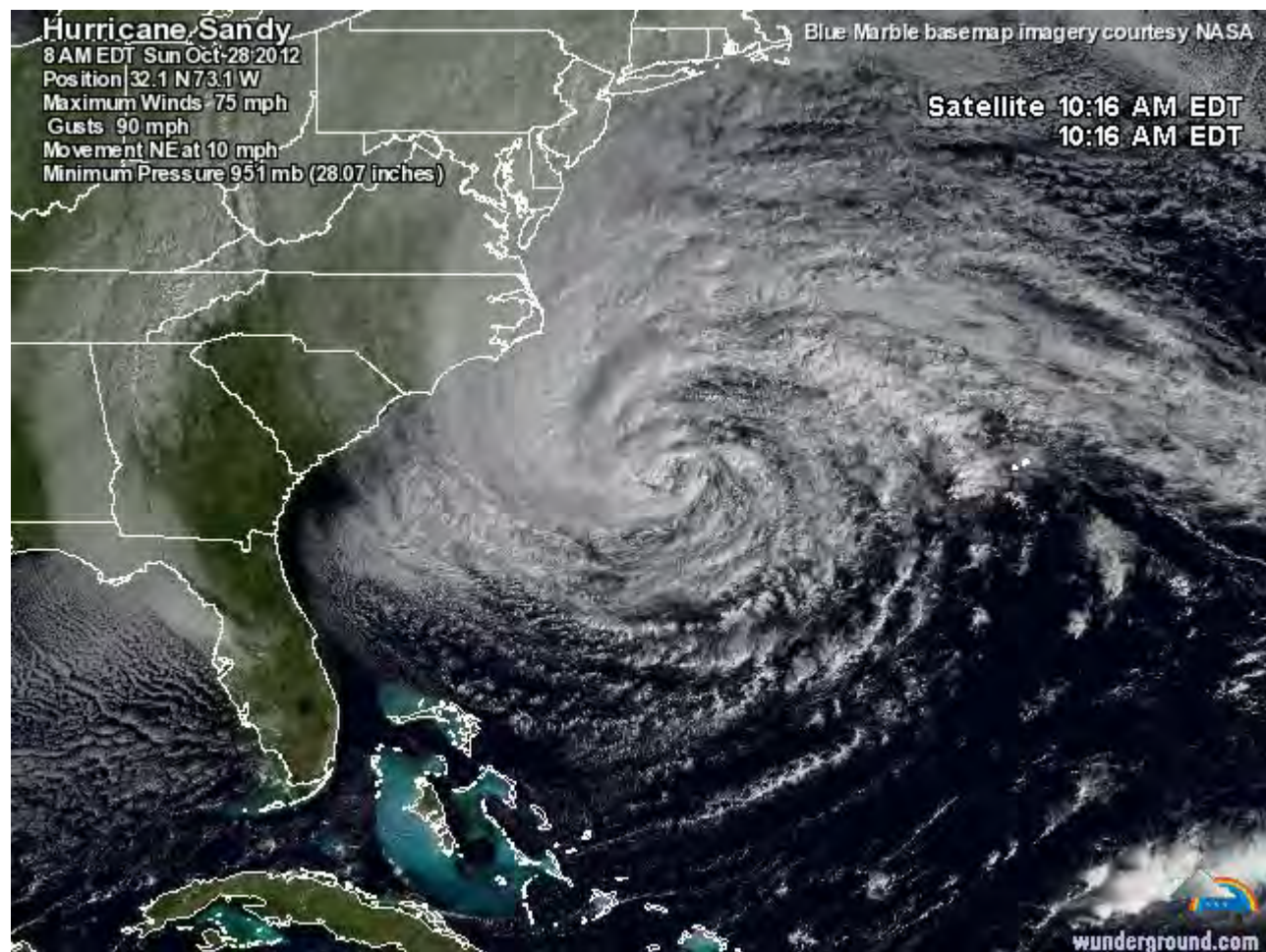
SANDY和槽前雲系(10/26)



強對流區往外擴張(10/27)



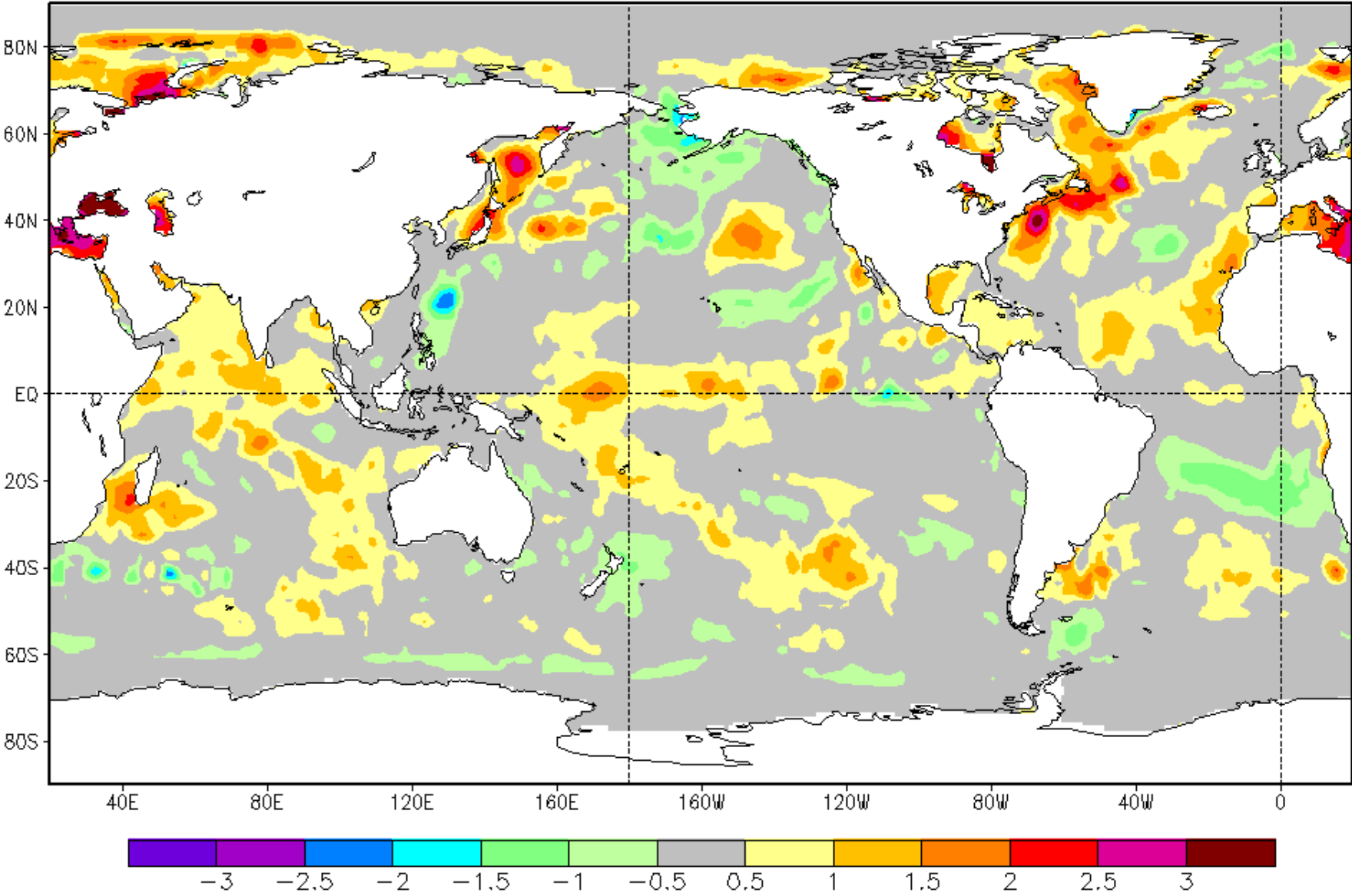
中心對流再度發展(10/28)



颶風和北方雲系結合(10/29)



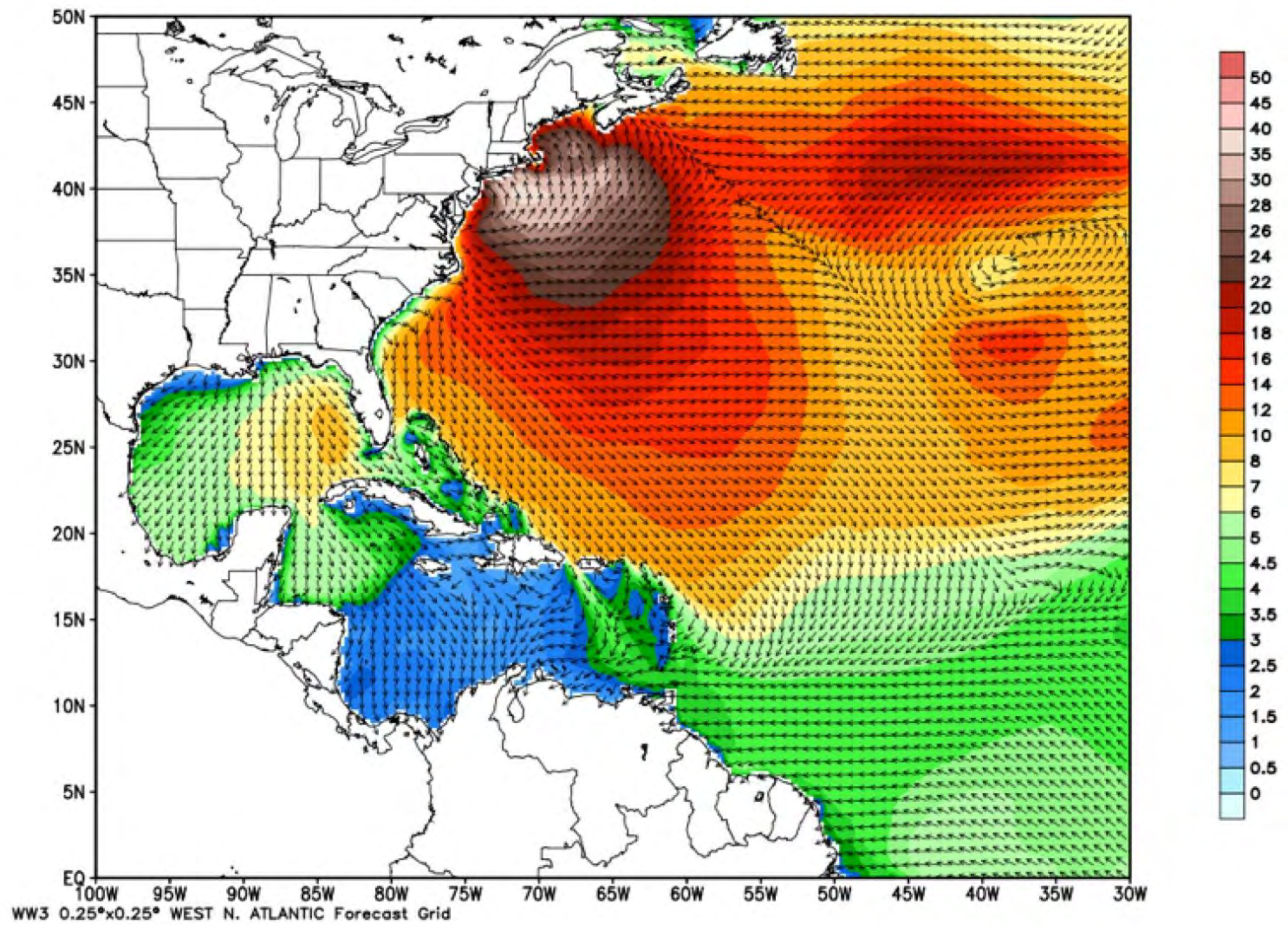
Sea Surface Temperature Anomaly (°C), Base Period 1971–2000
Week of 24 OCT 2012



NOAA GOES 13 121026 1245 UTC NASA GSFC GOES Project

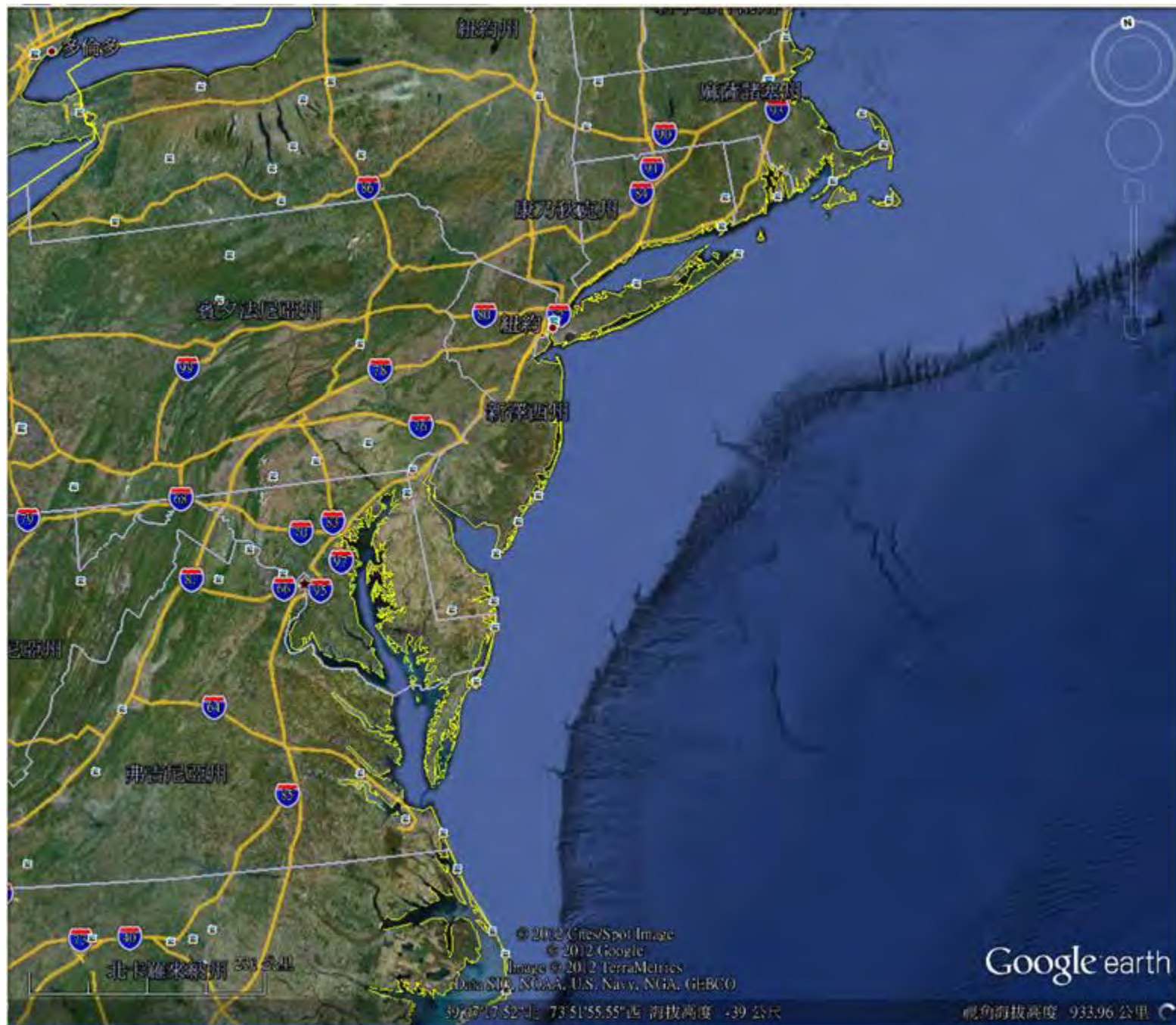


WW3 Surface Significant Height of Combined Wind Waves and Swell [feet] & Direction
Init: 06Z28OCT2012 -- [42] hr --> Valid Tue 00Z30OCT2012 MaxHeight: 37.1 feet



紐約海平面上升10英尺(約3.0公尺)



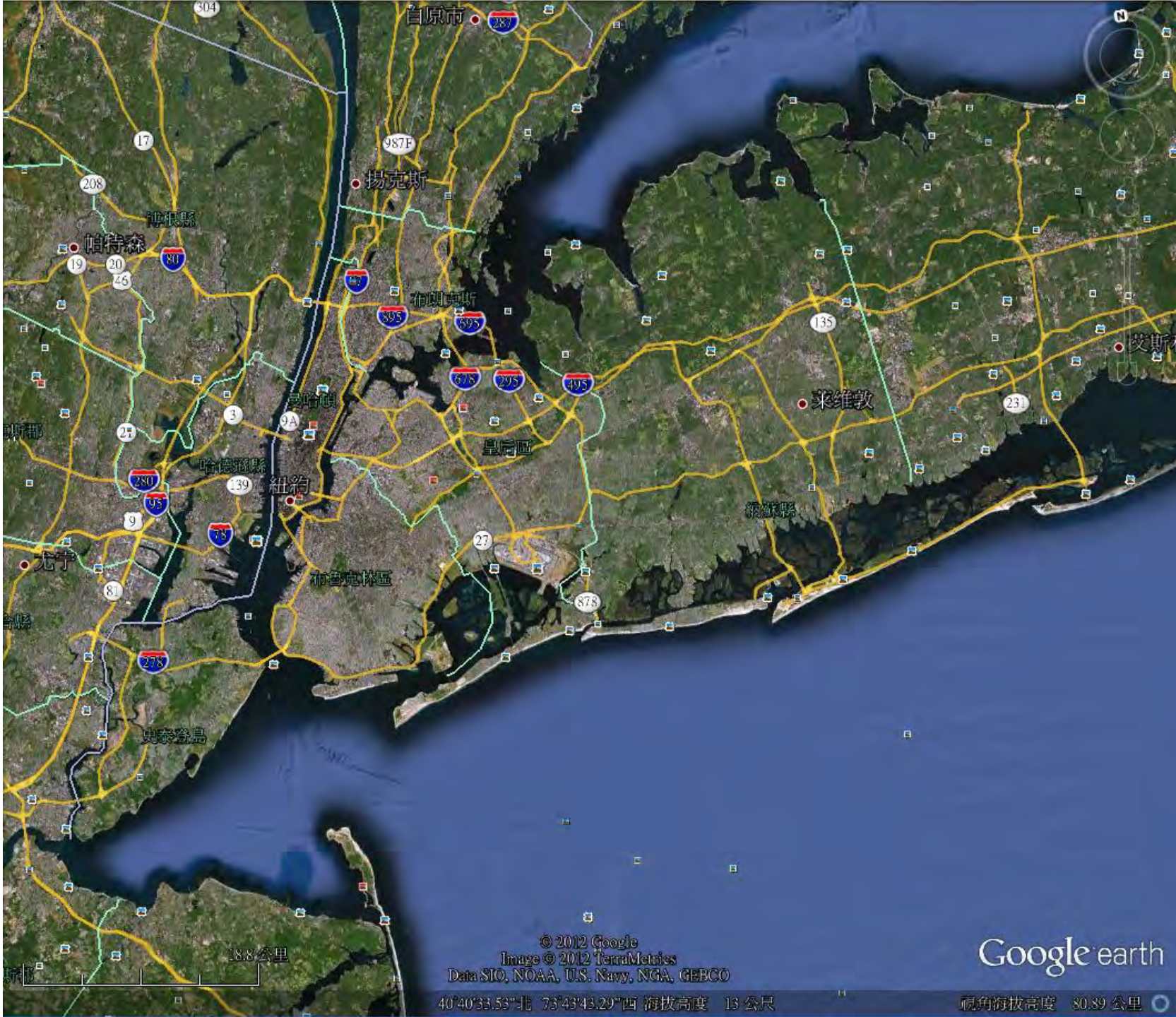


© 2012 Cires/Spot Image
© 2012 Google
Image © 2012 TerraMetrics
Data SRTM, NOAA, U.S. Navy, NGA, GEBCO

Google earth

39°07'05.22"北 73°51'55.55"西 海拔高度 -39 公尺

视角海拔高度 933.96 公里



© 2012 Google
Image © 2012 TerraMetrics
Data SIO, NOAA, U.S. Navy, NGA, GEBCO

Google earth

40°40'33.53"北 73°43'43.29"西 海拔高度 13 公尺

視角海拔高度 80.89 公里

18.8 公里

Battery Park



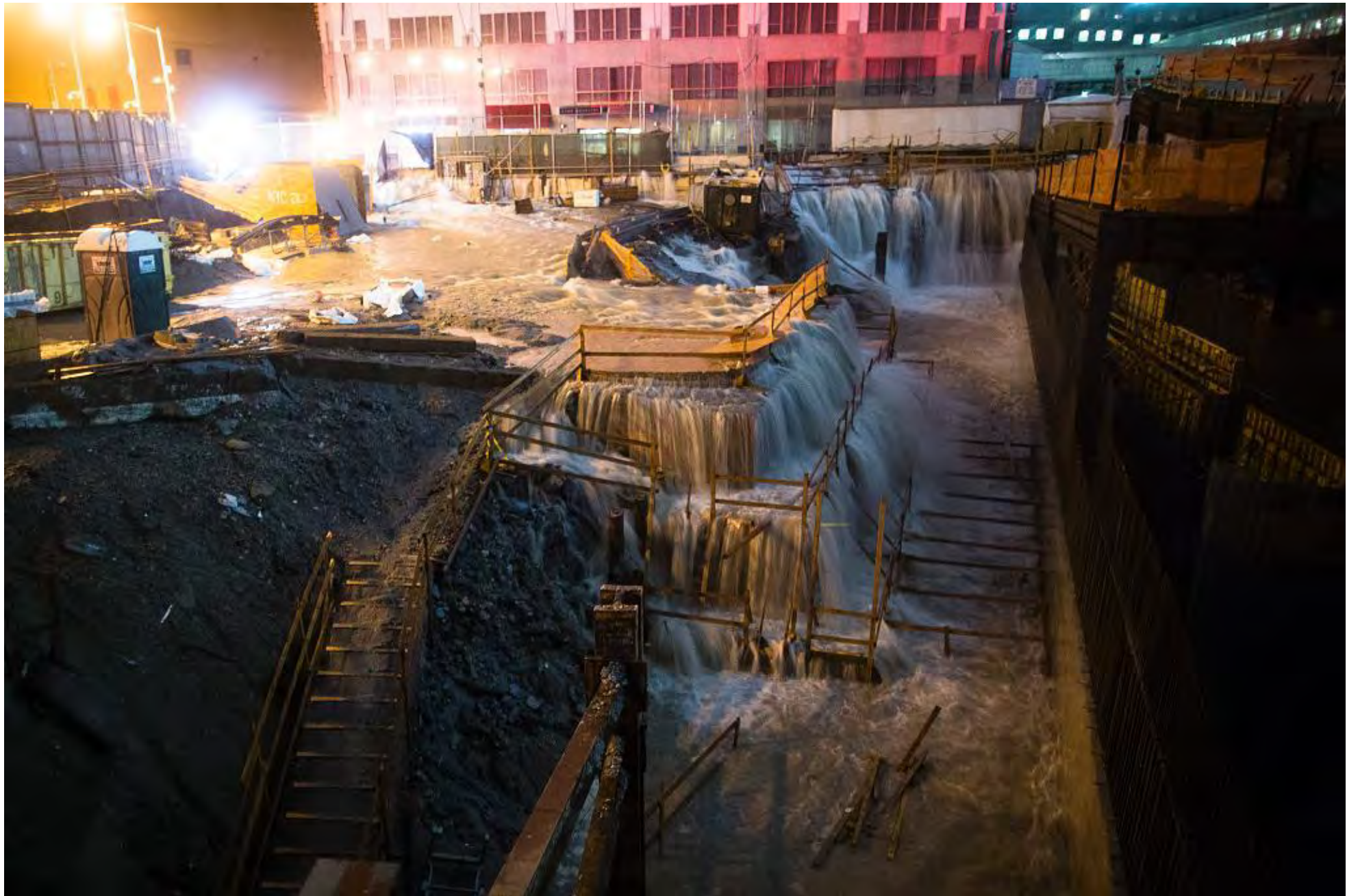
SANDY 的雨和雪













BEFORE



AFTER




























Deaths and damage by region

| Region | Fatalities [†] | | | | Missing | Damage (USD) | Source(s) |
|------------------------------------------------------------------------------------------------------|-------------------------|------------|-----------|-----------|-----------|----------------------|------------------------------|
| | Total | Direct | Indirect | N/A | | | |
|  Bermuda | 0 | 0 | 0 | 0 | 0 | Minimal | [3] |
|  Canada | 2 | 1 | 1 | 0 | 0 | \$100 million | [153][158][159] |
|  Cuba | 11 | 6 | 0 | 5 | 0 | \$2 billion | [7][154][160][161] |
|  Dominican Republic | 2 | 2 | 0 | 0 | 0 | \$30 million | [7][154][162] |
|  Haiti | 54 | 20 | 0 | 34 | 21 | \$750 million | [7][155][163][164][165][166] |
|  Jamaica | 2 | 1 | 1 | 0 | 0 | \$100 million | [7][154][167] |
| Offshore of the U.S. | 2 | 2 | 0 | 0 | 0 | — | [3] |
|  Puerto Rico | 1 | 1 | 0 | 0 | 0 | — | [3] |
|  The Bahamas | 2 | 2 | 0 | 0 | 0 | \$700 million | [7][154][168] |
|  United States | 157 | 71 | 85 | 1 | 0 | \$71.4 billion | [14] |
| Totals: | 233 | 106 | 87 | 40 | 21 | ≥\$75 billion | |

* Because of differing sources, totals may not match.

https://en.wikipedia.org/wiki/Hurricane_Sandy

Hurricane Sandy的啟示

- Hurricane Sandy的災損很高，但它是一次成功的防災典範
- 如果沒有預警與防備，肯定會是個難以想像的大災難
- 當科學預測告訴你一個大災難即將發生
 - 一個前所未見而且直覺上能是「不太可能發生」的情況
 - 資訊提供者該如何反應？
 - 防災決策者該如何面對？

Hurricane Harvey 2017, Texas

